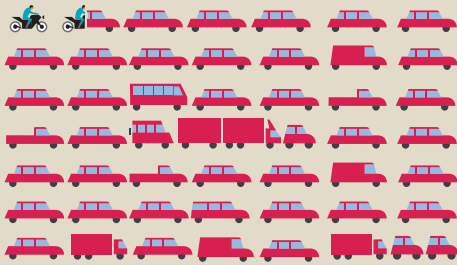
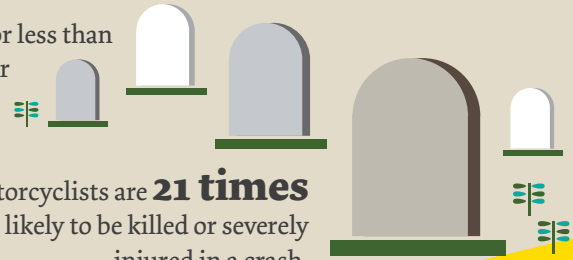


# Understanding Motorcycle Levies



Motorcycles account for less than **3%** of the total motor vehicles on the road,



but motorcyclists are **21 times** more likely to be killed or severely injured in a crash.

Motorcycles licence levies for 2016/17 (incl. Safety Levy):



Current levy **\$329**

True cost **\$1,419**

If licence levies of motorcycles reflected the true cost of motorcycle injuries.

per year

ACC is charging motorcyclists \$27 million so other vehicle owners will cross-subsidise motorcycle owners by \$87 million.



**42%**

of the cost of motorcycle accidents is from single vehicle crashes.



**\$27 million**

Motorcyclists will pay levies to cover the cost of motorcycle accidents.



**\$87 million**

Other motor vehicle owners will pay in levies to cover the cost of motorcycle accidents.

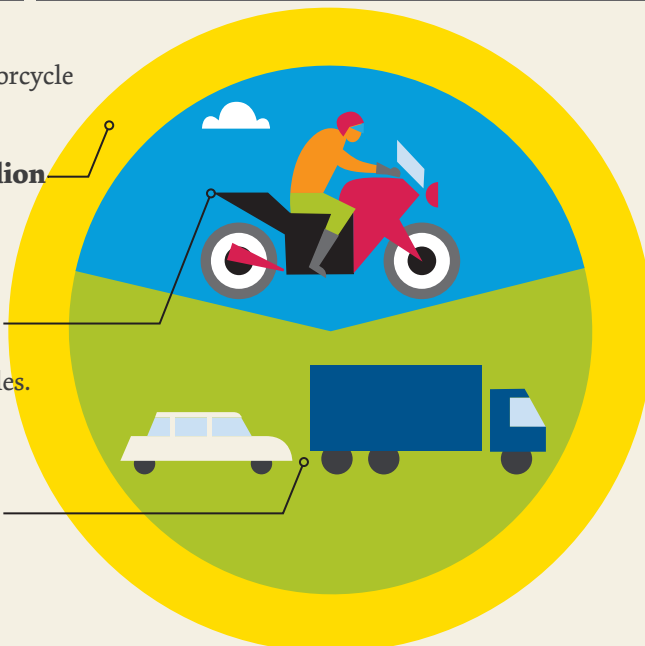


Calculated cost of motorcycle injuries per year =

**\$114 million**

**\$48 million** involve **just** motorcycles.

**\$66 million** involve other vehicles.



**16%**

of the Motor Vehicle Account's severe injuries are motorcyclists.

Rehabilitation and compensation for just one severe claim can be more than \$20 million.